



THAME WORKHOLDING

Field End, Thame Road
Long Crendon, Aylesbury
Bucks HP18 9EJ, England

Tel: 01844 208050

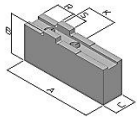
Email: sales@thameworkholding.com



Chuck Type:
SMW-AUTOBLOK KNCS 400-92

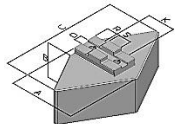
Fax: 01844 201699

Web: www.thameworkholding.com



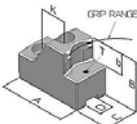
Type GS,GA

Slot/Tenon Soft Top Jaws				Slot: 12mm	Tenon: 26mm	Hole Centres: 54mm	
Jaw Type	A	B	C		Kg/Set	Material	Part No.
GS	145	60	40		6.8	080M15	CU32
GS	110	60	40		4.9	080M15	CU321
GS	145	100	40		11.1	080M15	CU323
GS	145	125	40		13.9	080M15	CU324
GS	145	150	40		16.9	080M15	CU325
GS	110	60	60		7.6	080M15	CU326
GS	100	60	80		8.4	080M15	DP32
GS	110	80	80		14.1	080M15	CU328
GS	145	80	50		11.6	080M15	CU329
GA	145	60	40		2.4	Aluminium	CW32



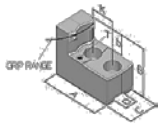
Type HS,HT,CF

Slot/Tenon Diamond & Segment Jaws							
HS	132	76	240		28.0	080M15	CQ32
HA	133	76	240		10.5	Aluminium	HT32
IS	148	51	Ø305		23.0	080M15	CF32

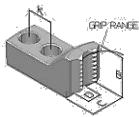


Type LY

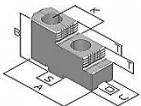
Adjustagrip Hard Jaws - External Clamping							
	B	C	b				
	59	40	25			590M17	
Gripping Ranges							
	51-165mm				4.0		LY40
	116-242mm				4.0		LY40
	165-292mm				3.2		LY43
	242-369mm				3.2		LY43



Available on request.



Available on request.

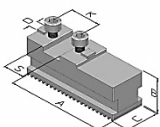


Type GX

Hard Reversible Top Jaws							
	A	B	C	T	Kg/Set		
GX	105	62	36	15	3.2	590M17	GX32



Height Pins for Adjustagrips				
	H	WAF	Thread	
	5	13	M8	IU05
	10	13	M8	IU10
	15	13	M8	IU15
	20	13	M8	IU20
	25	13	M8	IU25



Base Jaws				
	A	B	C	Kg/Set
GBK	125	43	32	3.0

Thame Workholding also design and manufacture jaws to suit your specific workpieces.